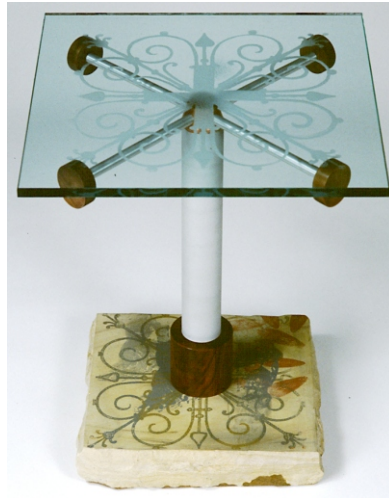
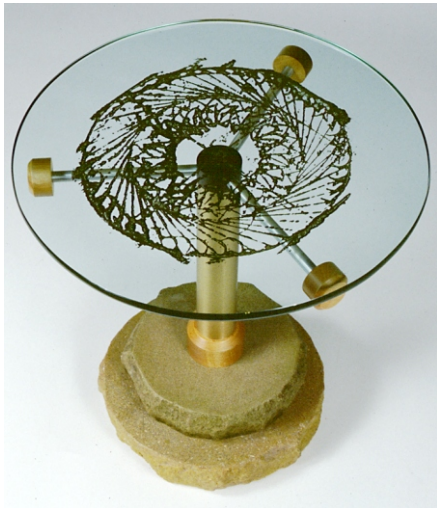




post
top
tops



etched +/- or painted surfaces

16" - 18" HEIGHT

glass/stone

16" - 20" ROUND OR SQUARE

1/2" OR 3/8" THICK

glass tabletop

scratch polish, sanblasted aluminum surface

anodized aluminum = color
elements may be *wood or aluminum

base
limestone, granite or marble

*choice of domestic or exotic hardwoods



top
tops